

Survival Guide



18. – 27. June 2018



CONTENT

WELCOME TO THE CZECH REPUBLIC AND BRNO	3
BEST Brno	7
ARRIVAL AND DEPARTURE	8
AIRPLANE	
BUS	
TRAIN	
CAR	
USEFUL INFORMATION	13
WHAT TO BRING	16
SMALL DICTIONARY	17
WHEN YOU GET LOST	18
CONTACTS	19

WELCOME

Welcome to the Survival Guide of Brno Summer Course.

Welcome to Brno!

Do not hesitate to ask us for any extra information if there is something that is not clear to you. This guide should serve you all the information you need, so don't forget it at home!

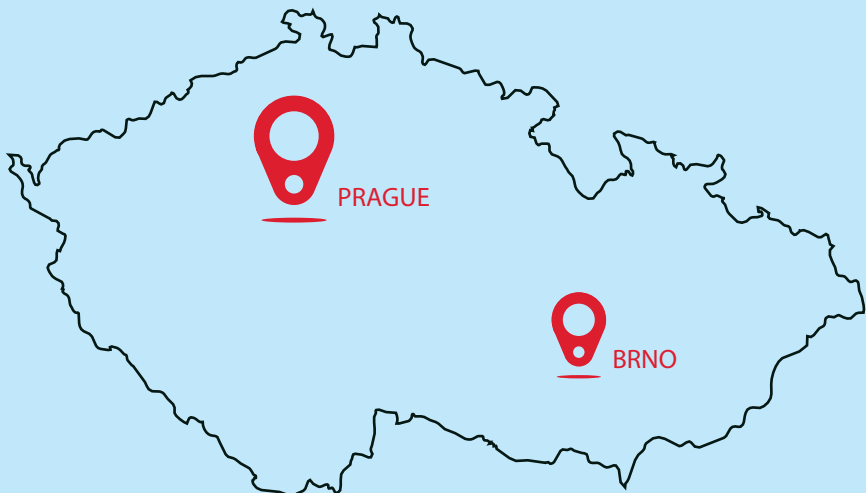
We wish you a very pleasant stay in beautiful Brno!



THE CZECH REPUBLIC

The Czech Republic is situated approximately in the geographical centre of Europe, and consists of historical lands Bohemia, Moravia and Silesia. The total population is about 10,3 millions. The average height above sea-level is 430 m. Even though the Czech Republic's area is only of 78,864 square kilometers, its wealth of natural beauty and monuments of cultural heritage contribute greatly to its global prestige as a major cultural destination.

The Czech lands have always been the crossroads of European cultures. The cultural character of Czech cities, villages and spa towns has always been a source of inspiration to visitors and guests, who come here from all corners of the world. The Czech Republic, among the youngest in the family of European countries, was found on January 1st 1993, when the Czechoslovak Federal Republic split into two independent states. Since 2002 Czech Republic is member of NATO.



Since 2004, the Czech Republic has been a member of the European Union. There is more to the Czech Republic than just Prague! This country's smaller towns have plenty to offer to visitors, who will be impressed by their well-preserved historical centers and carefully maintained monuments whose importance often transcends regional borders. Some of these towns were declared urban monument reservations or even included on a List of World Cultural Heritage of UNESCO.

Thanks to the beautiful and colourful nature there are ideal conditions for tourism. You can go to the mountains, which surround our country, but also in the romantic valleys of our rivers. Many routes follow the borders of the republic and link up with the touristic or cyclical routes of the neighbouring countries. The ones who are not fond of long walking tours can have a walk in the forest combined for example with picking mushrooms. Rock climbers can have a good time in the sand stone rocks, Winter sport-lovers in the mountains.

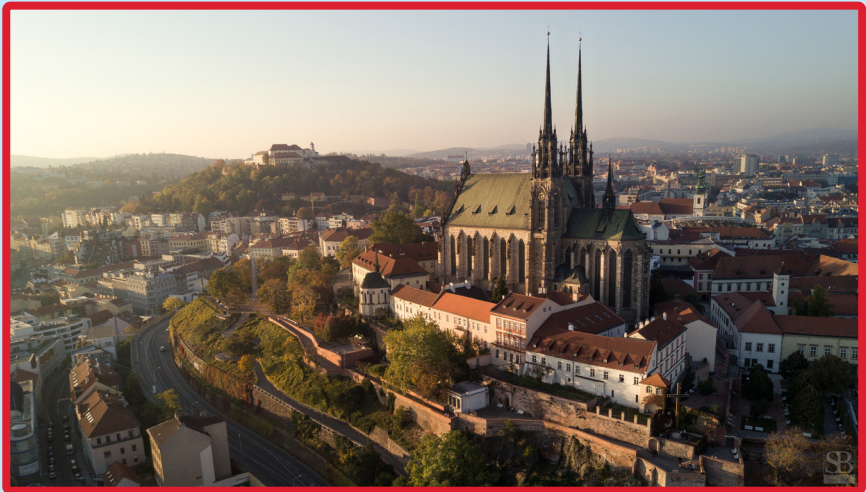
- Official Site of the Czech Republic www.czech.cz
- Site for tourists coming to Czech Republic www.czechtourism.com
- More detailed information about Czech turism www.czecot.com
- More than a destination guide www.myczechrepublic.com
- Czech Republic travel guide www.travelguide.cz
- Maps of Czech Republic www.mapy.cz

THE CITY OF BRNO

Brno is the largest Moravian city and the second largest city in the Czech Republic, it's population is approx. 370 000 inhabitants. The number of inhabitants together with the city's economic importance place it unambiguously above other cities in the region.

Brno is situated in a picturesque countryside, surrounded on three sides by wooded hills and opening to the Southern Moravian lowlands to the south of the city. In the north, the city is guarded by the foothills of the Drahany and Bohemian-Moravian ranges.

www.brno.cz



BEST Brno

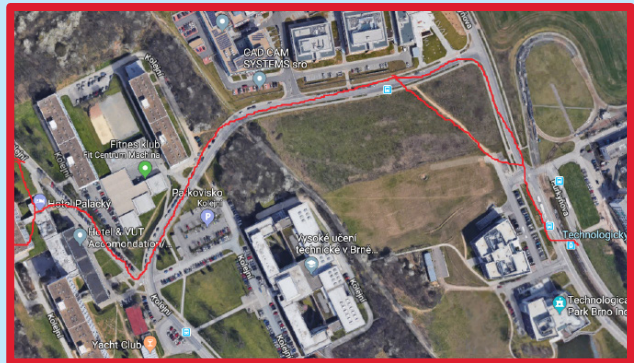
BEST Brno, local group of international BEST, was founded at Brno University of Technology in 2005 as a first of its kind in Czech Republic.

ACCOMMODATION

Accommodation for this course is reserved at students residence and students will have two persons rooms.

ADDRESS

Kolejní 2, A02
612 00 Brno
Czech Republic



HOW TO GET THERE

From Main Railway Station take tram number 12 in a direction Technologický park and get off at final stop. Most of the time there is a bunch of students going to the dormitories. Another way is to get off at Skacelova stop and take bus number 53 in the direction of Technologický park and get off at the Kolejní stop. That way you will be right in front of the dormitories.

TRANSPORT

AIRPORT - PRAGUE

The Prague International Airport is an air gate to the Czech Republic. The airport provides daily connection from/to major European cities. The airport called Vaclav Havel Airport Prague is located on the northwest edge of Prague. The city of Brno can be reached from Prague by car, bus, or train. The most favourable services are offered by company Student Agency, which provides comfortable travelling straight from the airport by bus. Open the link www.studentagency.cz and make an online ticket reservation. The code of the reservation will serve you as a ticket. After your landing at Prague, just get off the Terminal 1, where the car park and bus stops are and find stop with route Karlovy Vary – Praha. Wait for arrival of a bright yellow bus with Student Agency sign. It's necessary to change a bus at Florenc bus station. After that just enjoy a hot drink, newspapers and movies before you'll reach Brno.

If you want to explore Prague before the course, you can make it by many means of public transportation to get from the airport to the centre. The basic ticket for the public transport in Prague costs 32 CZK/90 minutes. To reach Brno from the city centre of Prague, use Student Agency bus as well. Buses depart from bus station Florenc (Subway line B, C). The journey takes less than three hours and costs 250 CZK. The more expensive way is by train from Main station Praha Hlavní nádraží (Subway line C) for about 350 CZK.

www.prg.aero

www.idos.cz

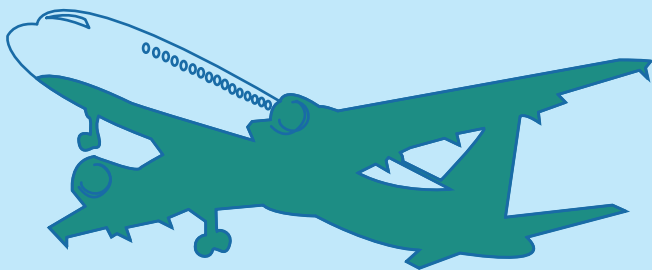
AIRPORT - BRATISLAVA

The Bratislava Airport is the principal airport of the Slovak Republic. It serves scheduled and non-scheduled air services on domestic as well as on the international flights. The connection from Bratislava to Brno is very good and fast. It doesn't take more than two hours. Search www.idos.cz for the best mean of transportation from Bratislava to Brno at the time after your arrival. There are services of EC trains, buses and Student Agency buses. It is better to book buses in advance (links to bus companies can be found after searching idos.cz).

Trains depart from Main station Bratislava Hlavná stanica. To get there from the airport, take the bus of public transportation No. 61 in front of the entrance to Terminal A. Buy the ticket before in the machine for 2,00 EUR (Slovaks use Euros). Drivers do not sell the tickets. For getting to Central Coach Terminal (Autobusová stanica) at Mlynské nivy, you can use the same bus 61 from the airport and change for the bus number 205 at Bajkalská stop afterwards. Get off the bus at Autobusova stanica stop and find the terminal of your bus.

www.letiskobratislava.sk

www.idos.cz



AIRPORT - VIENNA

It is also possible to use an airport in Vienna. Located at the heart of Europe and on the threshold to Eastern Europe, Vienna International Airport is the most Easterly “western airport”. The Brno is in a distance comparable with the distance from Bratislava. The best way how to reach Brno from Vienna airport is by Student Agency bus. These buses go straight from the airport to Brno, with daily services. Buy the ticket to Brno online at their websites www.studentagency.cz from Student Agency bus stop Wien Schwechat Airport outside the arrivals hall (340 CZK) or bus stop Wien U2 Stadion, Busterminal Stadioncenter, Engerthstrasse (175 CZK) in the case you’re planning to spend some time at Vienna city. More expensive train connection to Brno is available from Wien Meidling station.

www.viennaairport.com
www.idos.cz

AIRPORT - BRNO

Another airport can be found in Brno - Brno Turany Airport. The airport is operated by several airlines (Czech Airlines, Travel Service etc.) as well as low-cost airlines (Ryanair, Wizzair, Smart Wings). The centre of the city can be reached by public transport (60 minutes ticket, 25 CZK), operates every 30 minutes. You have to buy the ticket in machine or by newsagents at the airport hall or more expensively by a driver. For this, you need change so don’t forget to exchange some Czech coins! The buses are going to the city centre. Get off the bus at the last stop – Hlavni nadrazi, Main station. One of the organisers will pick you there.

www.airport-brno.cz

BUS

Bus is the cheapest way to travel across Europe. The Czech Republic provides connection from/to major European cities several times per week. Brno main bus station Zvonarka is situated close to the city centre. To other parts of Brno you can move by public transport. Don't be afraid, it's impossible to get lost, because one of the organizers will pick you up at the station!

www.idos.cz
www.eurolines.com

STUDENT AGENCY BUSES

The company Student Agency offers cheap journeys within Czech and Slovak Republic as well as to some cities in foreign countries. Their buses are luxurious with free coffee/tea, magazines, television and wi-fi. You can recognise them by the yellow colour. It's more than handy to take one from Prague, Bratislava or Vienna.

We strongly advice to buy a ticket in advance , with <26 or ISIC discount. A number of reservation is sufficient as a ticket. The buses arrive in Brno at the station in opposite side to hotel Grand, close to Main train station. One of the organisers will pick you up there, just give us the exact time.

www.studentagency.cz

TRAIN

It is easy to get to the Czech Republic from all major European cities by train. Remember, in summer the international trains tend to be full and you should book your seat at least a few weeks ahead. Main station in Brno is called Brno Hlavní nádraží. In front of the station there is one of the busiest stop of public transportation in Brno. You can quickly move to the other parts of Brno by tram or bus. However don't worry about the numbers of trams over there, one of the organizers will pick you up at the train station.

www.cd.cz
www.idos.cz

CAR

The Czech Republic is covered with a network of generally good roads; old routes often go through villages and small towns. There are some 800 km of European-style motorways, the main ones being the D1 or E50/E65 between Prague and Brno. The traffic on motorways and country roads tends to be light. The speed limit in built-up areas is 50 km/h, on major roads 90 km/h, and on motorways 130 km/h. You'll need a certificate of insurance or "green card", normally valid for three months, showing you have full liability insurance. Your car must be equipped with a safety vest, first-aid kit and a red-and-white warning triangle. There is no problem to park your car by the place of accommodation.

www.uamk.cz

PUBLIC TRANSPORT IN BRNO

The City of Brno and its surroundings are serviced by an integrated public transport system with unified travel tickets. The serviced area is divided into several tariff zones. The zones for the area of the City of Brno are 100 and 101. Before each journey, the traveller must purchase a ticket. The validity of a ticket is time and zone limited. The ticket is valid from the moment it is signed for a period specified on it and only in those tariff zones marked on the ticket. All tickets are transfer, except the 20 CZK ticket - this is valid only in the vehicle in which it was signed. The ticket must be signed immediately after boarding a vehicle. During changing, tickets can't be further signed. For most journeys around Brno, a two-zone ticket for 60 minutes will be sufficient (25 CZK). For a longer stay, one-day or three-day tickets for zones 100+101 are offered for an attractive price.

www.dpmb.cz

WEATHER

The Czech Republic is located on the borderline between two great climatic regimes, the oceanic and the continental, and the weather consequently tends to be fairly variable in different regions. The normal summer temperature varies between 18 °C and 25°C. The summer is sunny, but unfortunately, like everywhere on Earth, sometimes it's raining.

www.chmu.cz

TIME

The Czech Republic uses the Central Europe Time - CET - GMT +1

CURRENCY

The unit of the Czech money is Česká koruna, Czech Crown, abbreviated CZK usually. Banks and hotels accept all convertible currencies, traveller's cheques and credit cards.



EXCHANGE RATE

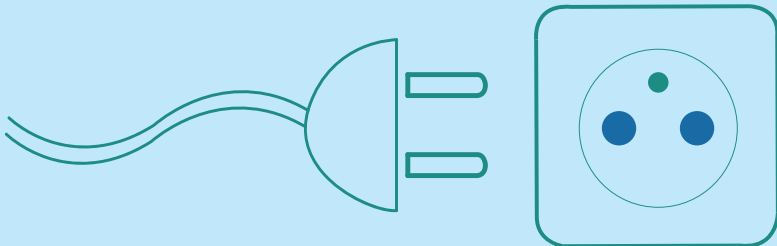
1 EURO = APPROXIMATELY 25 CZECH CROWNS

APROXIMATE PRICES IN CZECH REPUBLIC

• 0,5 l beer in store	15 CZK
• 0,5 l beer in pub	35 CZK
• 0,2 l wine in pub	45 CZK
• 0,7 l wine in pub	150 CZK
• Lunch or supper in restaurant	130 CZK
• Pizza	150 CZK
• Ice cream	20 CZK
• Taxi per 1 km	20 CZK

ELECTRICITY

The voltage in the Czech Republic as well as the socket and plug sizes is identical to the most of European countries - 230V/50Hz.



FOOD & DRINKS

Although Czech cuisine is not the best choice for vegetarians, everybody will most likely find at least a couple of meals "to die for". Czech cooking and eating habits have been shifting in the general direction to a healthier lifestyle, but traditional Czech recipes are still extremely popular - and those who tend to be high in calories, fat and sugar. Sauces and condiments are popular.

A Czech meal often starts with soup. The main course usually consists of meat and a side dish. The most popular meats are chicken and pork, followed by beef, usually served with some kind of sauce. Fish is not common although trout or cod are sometimes served. As far as drinks go, a Czech meal is often accompanied by the national beverage, which is beer.

WHAT TO BRING

- Travel and medical insurance
- Passport and visa if needed
- Money
- Student card
- Personal hygiene items
- Medications
- Sport clothes and shoes
- Pullover and raincoat
- Crazy clothes for party (we will inform you about topic)
- Festive clothes - suits, dresses, shirt, skirt...
- Swimsuit
- Towel
- Sunglasses
- Music instrument, if you have any
- Items for the International Evening (traditional drink and food)
- Umbrella
- Money for extra activities(city rally, pub crawling) & fee (50€)



SMALL DICTIONARY

Hello	Ahoj	Zastávka	Stop
Good morning	Dobré ráno	Linka	Line
Good night	Dobrou noc	Terminus	Konečná
Good appetite	Dobrou chuť	At request	Na znamení
Cheers	Na zdraví	Zone	Zóna
No	Ne	Ticket	Jízdenka
Yes	Ano	Transfer	Přestupní
Thank you	Děkuji	Platform	Nástupiště
Excuse me	Promiňte	Service vehicle	Služební jízda
Please	Prosím	Out of operation	Mimo provoz
I am...	Já jsem...	Wait	Čekajte
Left, right	Vlevo, vpravo	I understand	Rozumím
Straight	Rovně	Main Station	Hlavní nádraží
Help	Pomoc	Train	Vlak
Beer	Pivo	Car	Auto
Vine	Víno	Airport	Letiště
Coffee	Káva	Tram	Tramvaj / šalina
Water	Voda	One	Jedna
Friend	Kamarád	Two	Dva
Boy	Kluk	Three	Tři
Girl	Holka	Four	Čtyři
I like you	Líbíš se mi	Five	Pět
Sex	Sex	Six	Šest
Use condom	Vem si kondom	Seven	Sedm
Nice shoes	Pěkný boty	Eight	Osm
Bus	Autobus	Nine	Devět
Trolley-bus	Trolejbus	Ten	Deset

USEFULL PHRASES

- Dobrý den. Můžete mi prosím poradit? Hi. Can you help me please?
- Potřebuji se dostat na koleje Pod Palackého vrchem. I need to get to Pod Palackeho vrchem dormitories.
- Hledám šalinu číslo 12, směr Technologický park. I'm looking for a tram 12 towards Technologicky park.
- Děkuji Vám za pomoc. Thanks for yours help.
- Jedno pivo prosím. I would like one beer, please.
- Jsem v Brně na kurzu. I am in Brno to participate in BEST course.
- Mám rád české pivo. I like czech beer.
- Máš moc krásné oči. You have beautiful eyes.

When you get lost, you can always call the cell phones of organisers, we will immediately help you!

IMPORTANT PHONE NUMBERS

There are three operators of mobile-phones in the Czech Republic: O2, T-Mobile and Vodafone. You can also buy a SIM card of our local operator if you wish, but it is not necessary.

• Emergency services	112
• Ambulance	155
• Police	158
• Fire	150
• Metropolitan police	156
• Telephone number information	1188

CONTACTS

BEST BRNO OFFICE

Údolní 53

620 00 Brno

tel.: +420 604 075 251

brno@BEST.eu.org

DAVID VEVERKA

participant responsible

tel.: +420 728 065 906

davidveverka.best@gmail.com

JIŘÍ CZIPSZER

main organiser

tel.: +420 736 764 978

jiri.czipszer@gmail.com

ZUZANA ŠTUBIANOVÁ

president

tel.: +421 918 057 469

zuzana.stubianova@gmail.

